

ESCALAS MAYORES Y MODOS GREGORIANOS

(EN TODAS LAS TONALIDADES)

NOTA: SE MUESTRAN TODAS LAS ESCALAS MAYORES, POR ORDEN PROGRESIVO DE ALTERACIONES (0, 1h, 1b, 2h, 2b, ETC) Y SUS MODOS RELATIVOS.

ORDEN SUGERIDO PARA EL DOMINIO DE LOS DIFERENTES MODOS:

- 1) JÓNICO (MODO MAYOR)
- 2) MIXOLÍDIO
- 3) DÓRICO
- 4) EOLIO (MODO MENOR ANTIGUO O NATURAL)
- 5) LÍDIO
- 6) FRIGIO
- 7) LOCRIO

DO MAYOR (C) Y MODOS RELATIVOS

I C JÓNICA (MODO MAYOR)



A musical staff with a treble clef and a common time signature. It contains the notes of the Jónica mode (C major scale) starting on C4: C, D, E, F, G, A, B, C.

II D DÓRICA



A musical staff with a treble clef and a common time signature. It contains the notes of the Dórica mode starting on D4: D, E, F, G, A, B, C, D.

III E FRIGIA



A musical staff with a treble clef and a common time signature. It contains the notes of the Frigia mode starting on E4: E, F, G, A, B, C, D, E.

IV F LIDIA



A musical staff with a treble clef and a common time signature. It contains the notes of the Lidia mode starting on F4: F, G, A, B, C, D, E, F.

V G MIXOLIDIA



A musical staff with a treble clef and a common time signature. It contains the notes of the Mixolidia mode starting on G4: G, A, B, C, D, E, F, G.

VI A EOLIA (MODO MENOR ANTIGUO O NATURAL)



A musical staff with a treble clef and a common time signature. It contains the notes of the Eolia mode (A natural minor scale) starting on A4: A, B, C, D, E, F, G, A.

VII B LOCRIA



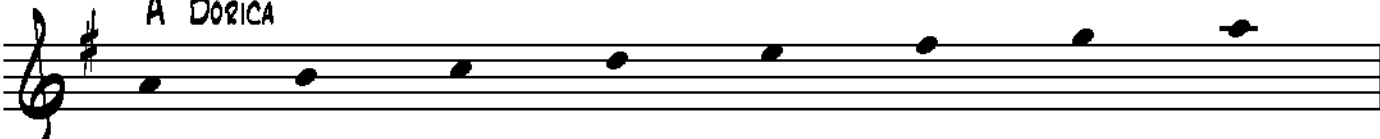
A musical staff with a treble clef and a common time signature. It contains the notes of the Locria mode starting on B4: B, C, D, E, F, G, A, B.

SOL MAYOR (G) Y MODOS RELATIVOS

I G JÓNICA (MODO MAYOR)



II A DÓRICA



III B FRIGIA



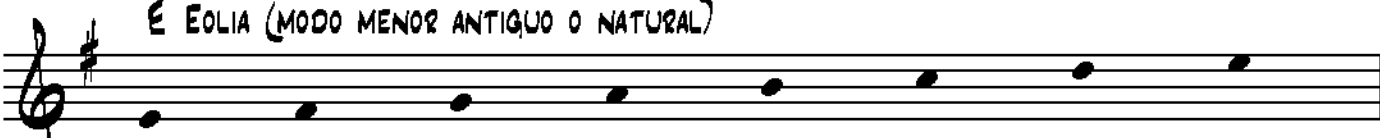
IV C LIDIA




V D MIXOLIDIA



VI E EOLIA (MODO MENOR ANTIGUO O NATURAL)



VII F# LOCRIA



FA MAYOR (F) Y MODOS RELATIVOS


I F JÓNICA (MODO MAYOR)




II G DÓRICA



III A FRIGIA



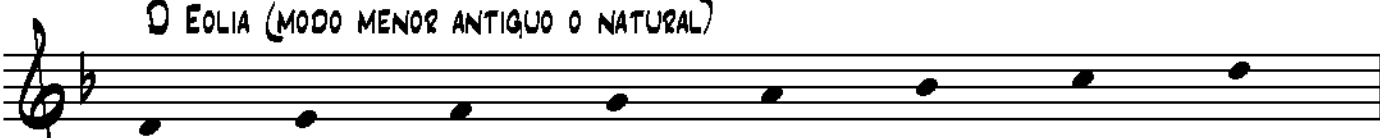
IV Bb LIDIA



V C MIXOLIDIA



VI D EOLIA (MODO MENOR ANTIGUO O NATURAL)



VII E LOCRIA



RE MAYOR (D) Y MODOS RELATIVOS

I D JÓNICA (MODO MAYOR)



II E DÓRICA



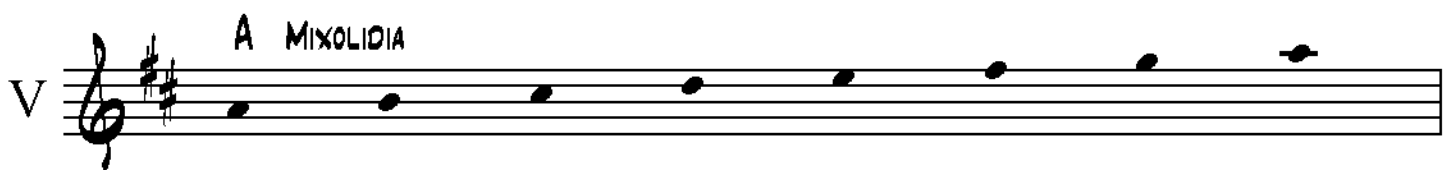
III F# FRIGIA



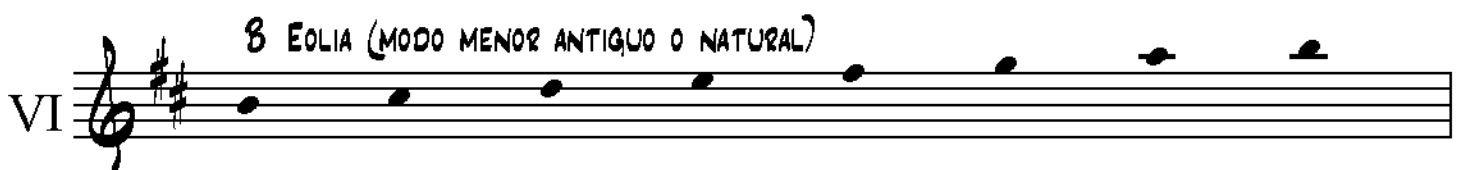
IV G LIDIA



V A MIXOLIDIA



VI B EOLIA (MODO MENOR ANTIGUO O NATURAL)



VII C# LOCRIA



Sib MAYOR (Bb) Y MODOS RELATIVOS

I B^b JONICA (MODO MAYOR)

II C DORICA

III D FRIGIA

IV E-flat LIDIA

V F MIXOLIDIA

VI G EOLIA (MODO MENOR ANTIGUO O NATURAL)

VII A LOCRIA

LA MAYOR (A) Y MODOS RELATIVOS

I A JÓNICA (MODO MAYOR)

II B DÓRICA

III C# FRIGIA

IV D LIDIA

V E MIXOLIDIA

VI F# EOLIA (MODO MENOR ANTIGUO O NATURAL)

VII G# LOCRIA

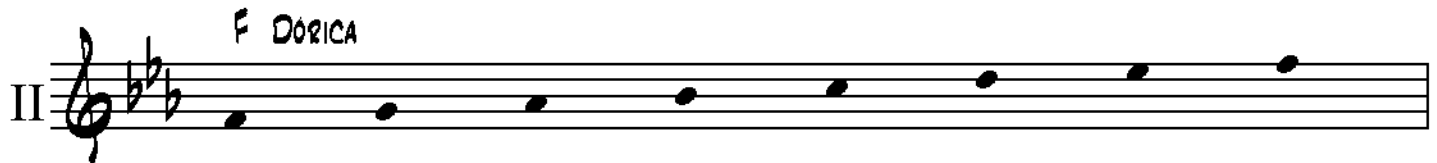
Mi \flat MAYOR (E \flat) Y MODOS RELATIVOS

I E \flat JÓNICA (MODO MAYOR)



A musical staff in treble clef with a key signature of two flats (B-flat and E-flat). The scale consists of eight quarter notes: E-flat, F, G, A, B-flat, C, D, and E-flat.

II F DÓRICA



A musical staff in treble clef with a key signature of two flats (B-flat and E-flat). The scale consists of eight quarter notes: F, G, A, B-flat, C, D, E-flat, and F.

III G FRIGIA



A musical staff in treble clef with a key signature of two flats (B-flat and E-flat). The scale consists of eight quarter notes: G, A, B-flat, C, D, E-flat, F, and G.

IV A \flat LIDIA



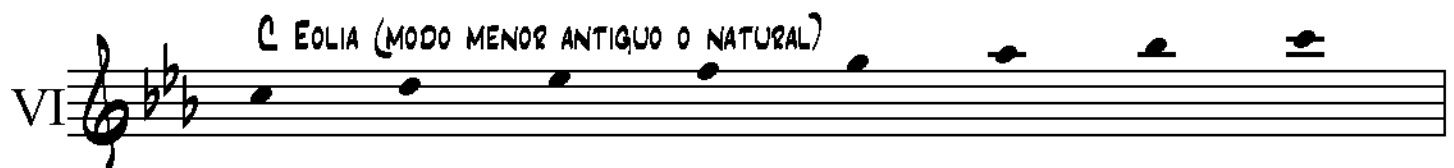
A musical staff in treble clef with a key signature of two flats (B-flat and E-flat). The scale consists of eight quarter notes: A-flat, B, C, D, E, F, G, and A-flat.

V B \flat MIXOLIDIA



A musical staff in treble clef with a key signature of two flats (B-flat and E-flat). The scale consists of eight quarter notes: B-flat, C, D, E, F, G, A, and B-flat.

VI C EOLIA (MODO MENOR ANTIGUO O NATURAL)



A musical staff in treble clef with a key signature of two flats (B-flat and E-flat). The scale consists of eight quarter notes: C, D, E-flat, F, G, A, B-flat, and C.

VII D LOCRIA



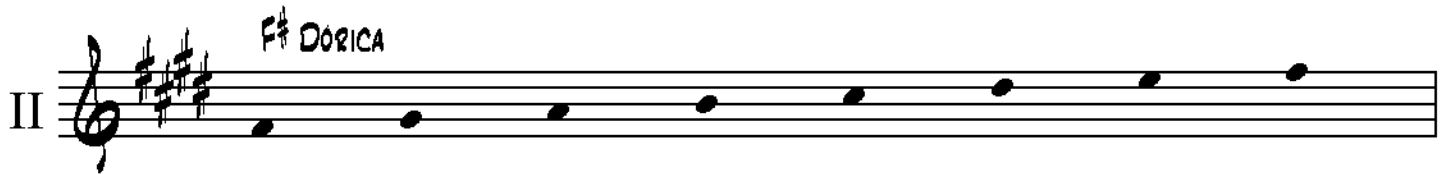
A musical staff in treble clef with a key signature of two flats (B-flat and E-flat). The scale consists of eight quarter notes: D, E-flat, F, G, A, B-flat, C, and D.

MI MAYOR (E) Y MODOS RELATIVOS

I E JÓNICA (MODO MAYOR)



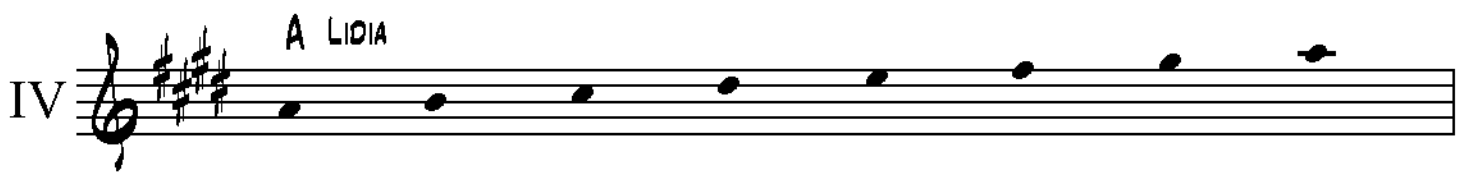
II F# DÓRICA




III G# FRIGIA



IV A LIDIA



V B MIXOLIDIA



VI C# EOLIA (MODO MENOR ANTIGUO O NATURAL)




VII D# LOCRIA



La^b MAYOR (A^b) Y MODOS RELATIVOS


I A^b JONICA (MODO MAYOR)



II B^b DORICA



III C FRIGIA



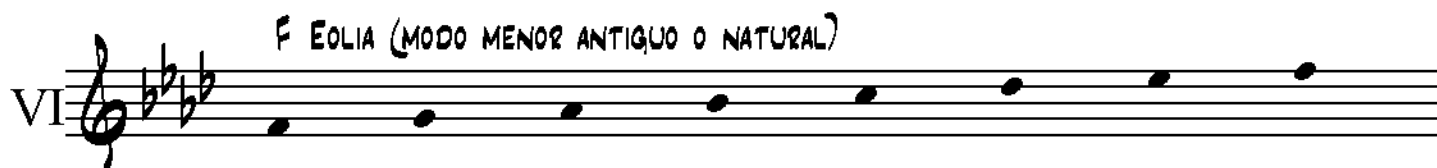
IV D^b LIDIA



V E^b MIXOLIDIA



VI F EOLIA (MODO MENOR ANTIGUO O NATURAL)



VII G LOCRIA



SI MAYOR (B) Y MODOS RELATIVOS

I **B JÓNICA (MODO MAYOR)**



II **C# DORICA**



III **D# FRIGIA**



IV **E LIDIA**



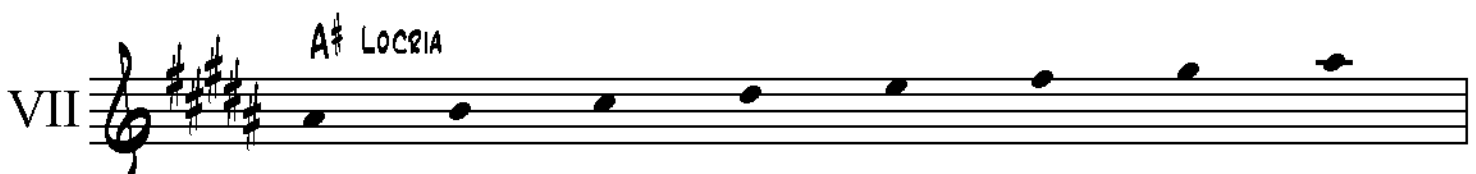
V **F# MIXOLIDIA**



VI **G# EOLIA (MODO MENOR ANTIGUO O NATURAL)**

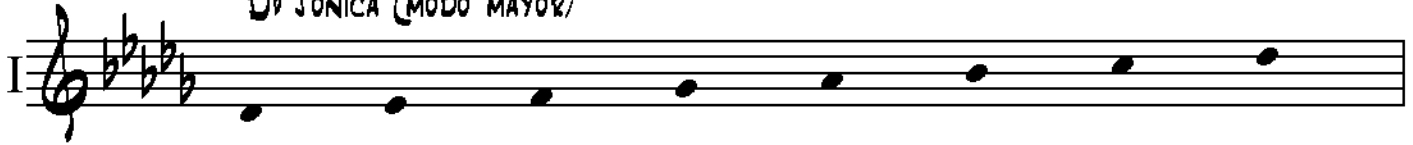


VII **A# LOCRIA**



Re \flat MAYOR (D \flat) Y MODOS RELATIVOS

D \flat JÓNICA (MODO MAYOR)



E \flat DORICA



F FRIGIA



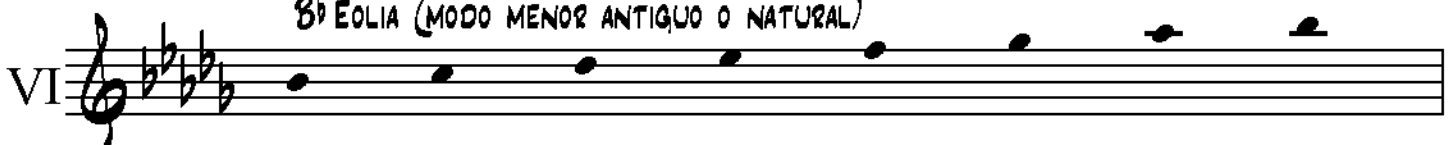
G \flat LIDIA



A \flat MIXOLIDIA



B \flat EOLIA (MODO MENOR ANTIGUO O NATURAL)



C LOCRIA



FA# MAYOR (F#) Y MODOS RELATIVOS

I F# JONICA (MODO MAYOR)



II G# DORICA



III A# FRIGIA



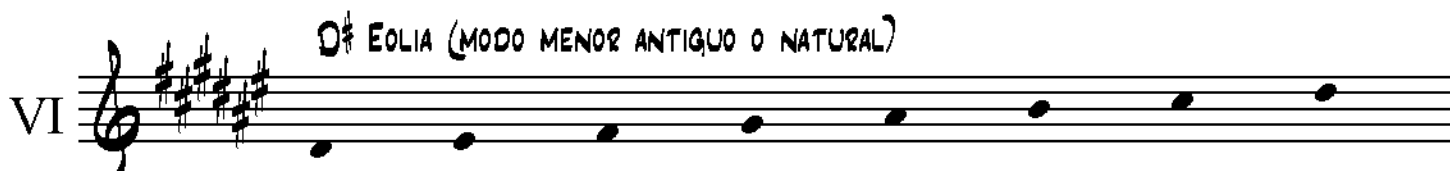
IV B LIDIA



V C# MIXOLIDIA



VI D# EOLIA (MODO MENOR ANTIGUO O NATURAL)



VII E# LOCRIA



SOL^bMAYOR (G^b) Y MODOS RELATIVOS

I G^b JONICA (MODO MAYOR)



II A^b DORICA



III B^b FRIGIA



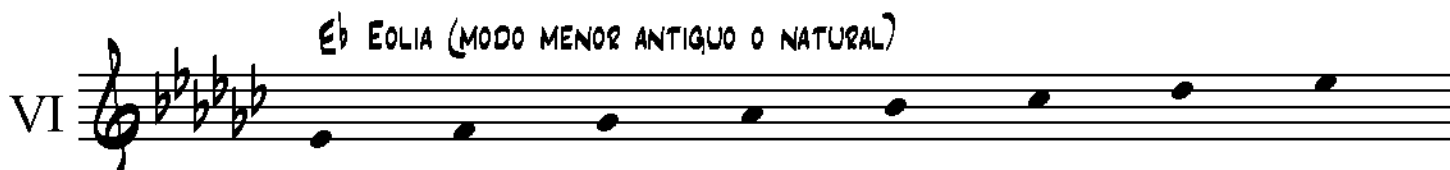
IV C^b LIDIA



V D^b MIXOLIDIA



VI E^b EOLIA (MODO MENOR ANTIGUO O NATURAL)



VII F LOCRIA



DO# MAYOR (C#) Y MODOS RELATIVOS

C# JÓNICA (MODO MAYOR)



D# DÓRICA



E# FRIGIA



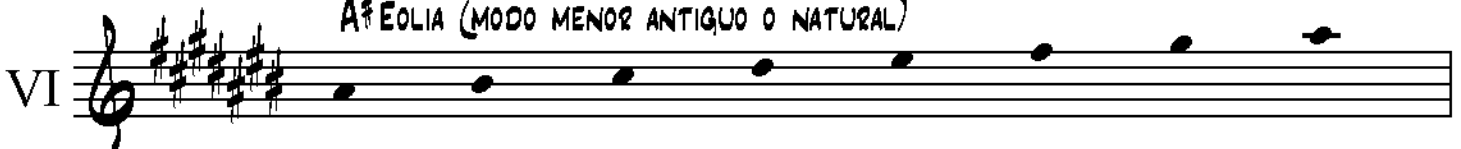
F# LIDIA



G# MIXOLIDIA



A# EOLIA (MODO MENOR ANTIGUO O NATURAL)

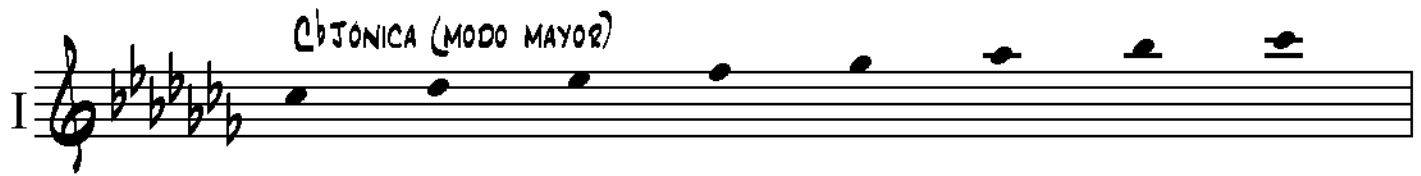


B# LOCRIA

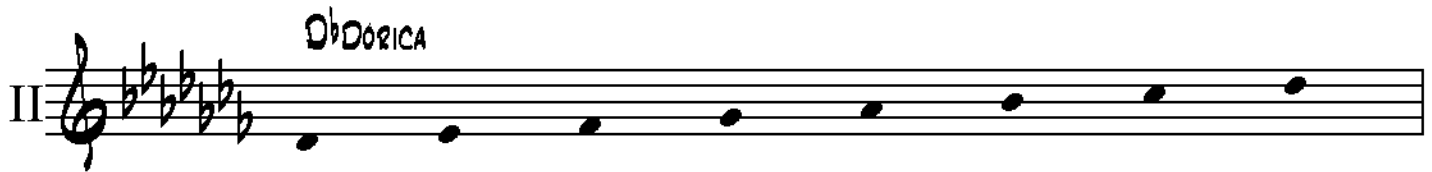


Dob Mayor (Cb) y Modos Relativos

I C^b JONICA (MODO MAYOR)



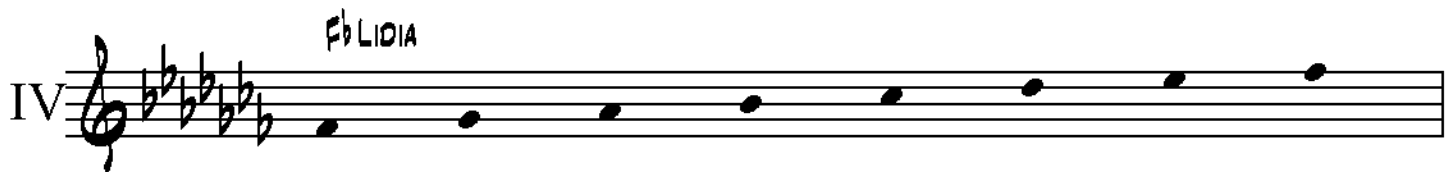
II D DORICA



III Eb FRIGIA



IV Fb LIDIA



V Gb MIXOLIDIA



VI Ab EOLIA (MODO MENOR ANTIGUO O NATURAL)



VII Bb LOCRIA

